



LIPTON CUP REGATTA
16 & 17 November 2024
Keelboat Notice of Race





Lipton Cup Regatta Keelboat Classes Saturday 16 & Sunday 17 November 2024 Notice of Race after NTC#1

Royal Yacht Club of Victoria (RYCV) as the Organising Authority invites entries to the Lipton Cup Regatta under the following conditions:

1. Rules

- 1.1. The event is governed by the rules as defined in the Racing Rules of Sailing including the prescriptions of Australian Sailing (RRS).
- 1.2. RRS Appendix T (Arbitration) shall apply.
- 1.3. The Australian Sailing (AS) Special Regulations Part 1 will apply.
- 1.4. The Offshore Rating Council (ORC) rules where applicable
- 1.5. The Australian Measurement System (AMS) rules where applicable
- 1.6. **[DP]** Denotes a rule for which the penalty is at the discretion of the Protest Committee. This changes RRS 64.1
- 1.7. **[SP]** Denotes a rule for which a standard penalty may be applied by the Race Committee or Technical Committee without a hearing. This changes RRS A5.
- 1.8. **[NP]** Denotes a rule that shall not be grounds for protests by a boat. This changes RRS 60.1(a).

2. Equipment and Entry

- 2.1. Boats will comply with AS Special Regulations – Part 1, Category 6 (includes working VHF radio)
- 2.2. RRS 51 is changed so that a boat with movable ballast or variable ballast (within the meaning of those terms in the Special Regulations) may move that ballast for the purpose of changing trim or stability to the extent permitted by their stability rating.
- 2.3. RRS 52 is changed to allow the adjustment of movable water ballast or canting keels and the use of stored power to do so.
- 2.4. **[SP]** Boats will carry no anchor forward of the stem or with any part of it outboard, except when anchoring. The standard penalty is to be scored DNS.



- 2.5. All competitors shall be members of a club affiliated with Australian Sailing or a World Sailing Member National Authority (MNA) or obtain a Sail Pass via this link <https://www.revolutionise.com.au/rycv/rego/start/>
- 2.6. Eligible boats may enter and pay the required fee by completing the online entry form available on the Lipton Cup Regatta website: www.liptoncup.com.au
- 2.7. Entries close at **mid-day** on Thursday 14 November 2024. No Further entries will be accepted after this time.

3. Fees

Fees are as follows:	Enter Before 17/10/24	Enter After 12/11/24
	Early-bird	Regular
Division Measurement Racing:	\$130	\$150
Division Classic and Cruising:	\$90	\$110
		Late
		\$190
		\$150

4. Racing will be in Divisions

Division	Handicapping	Description
Measurement Racing	AMS, ORC, and PHS including scratch classes e.g., S80's, Sydney Yachts, Adams10, & Bluebirds	This Division may be split into separate starts at the organiser's discretion considering the number and type of entries
Classic and Cruising	PHS	This Division may be split into separate starts at the organiser's discretion considering the number and type of entries

5. Advertising

Boats may be required to display advertising chosen and supplied by the organising authority.



6. Schedule

Division: Measurement Racing

Date	Races Scheduled	First Warning Signal	Course Type
Sat 16 Nov	3	1155	Windward/Leeward on Alpha course
Sun 17 Nov	1	0955	Long, Fixed Marks Starting on Charlie Course

Division: Classic and Cruising

Date	Races Scheduled	First Warning Signal	Course Type
Sat 16 Nov	1	1055	Long, Fixed Marks starting on Charlie Course
Sun 17 Nov	1	1020	Fixed Marks on Charlie Course

- 6.1. On the last scheduled day of racing no warning signal will be made after 1300.

7. Sailing Instructions

The Sailing Instructions will be available by Tuesday 12 November 2024 on the Lipton Cup Regatta website (www.liptoncup.com.au). Sailing Instructions may also be available from RYCV on race day.

8. Radio Communication

- 8.1. **[DP]** Except in an emergency, a boat that is racing shall not make voice or data transmissions and shall not receive voice or data communication that is not available to all boats.

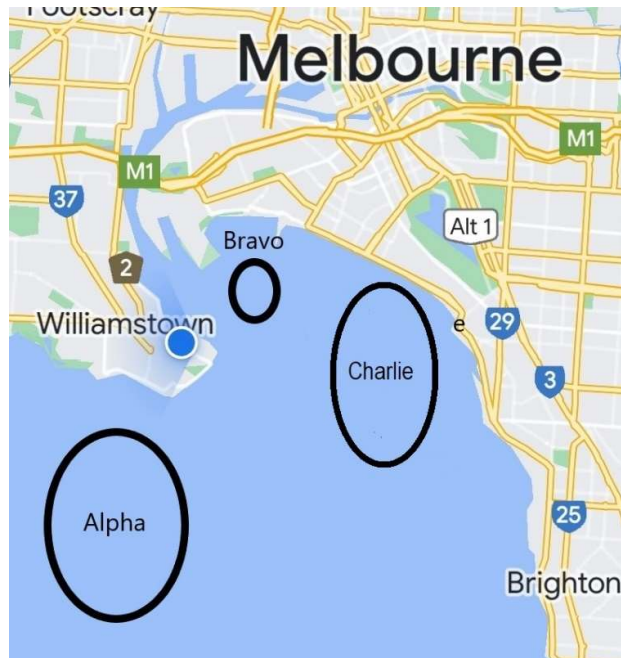
9. Venue

- 9.1. The regatta will be conducted from the Royal Yacht Club of Victoria, 120 Nelson Place, Williamstown. Racing will take place on the waters of Hobsons Bay and Northern Port Phillip.



10. The Courses

- 10.1. The courses will be as described in the Sailing Instructions. General diagram below:



11. Scoring

- 11.1. There shall be a minimum of 3 entries to constitute a division.
11.2. For each division one (1) race is required to be completed to constitute a series.
11.3. For each division a boat's series score will be the total of her race scores.

12. Prizes

- 12.1. Prizes will be awarded as follows:

For the Measurement Racing Divisions, prizes will be awarded to the first, second, and third place in series scores in each of AMS, ORC, and PHS handicaps.

For the Classic and Cruising division prizes will be awarded to the first, second, and third place in series scores on PHS handicap.



- 12.2. The Lipton Cup Perpetual Trophy is jointly awarded to the boats winning the series score in each of the Measurement Racing Divisions on PHS handicap and the winner of the Classic and Cruising division on PHS handicap.
- 12.3. Additional prizes may be awarded at the discretion of the organising authority.
- 12.4. Presentation of prizes will take place at RYCV at the end of the final day's racing.

13. Risk Statement

RRS 3 states: "The responsibility for a boat's decision to participate in a race or to continue *racing* is hers alone". By participating in this event each competitor agrees and acknowledges that sailing is a potentially dangerous activity with inherent risks. These risks include strong winds and rough seas, sudden changes in weather, failure of equipment, boat handling errors, poor seamanship by other boats, loss of balance on an unstable platform and fatigue resulting in increased risk of injury. Inherent in the sport of sailing is the risk of permanent, catastrophic injury or death by drowning, trauma, hypothermia, or other causes.

14. Insurance

Each participating boat shall be insured with valid third-party insurance with a minimum cover of AUD \$10 Million per incident or the equivalent and shall produce evidence of currency if requested by the Organising Authority.

15. Further Information

The RYCV club will be open on Friday 15 November for the convenience of all competitors. Food & beverages will be available from 1700 on Friday 15 November, and on race days, including breakfast.

For more information visit the regatta website
<https://www.liptoncup.com.au/> or contact:

Andy Warner
RYCV Sailing Manager
sailmanager@rycv.asn.au
mobile 0402858123