



# LIPTON CUP REGATTA

## Off The Beach Classes

Sat 16 and Sun 17 November 2024





# SAILING INSTRUCTIONS

## 1.0 RULES

1.1 The regatta will be governed by the rules as defined in the NOR

## 2.0 NOTICES TO COMPETITORS

2.1 Notice to competitors will be posted on the official notice board in the Off the Beach (OTB) club room. Notices may also be posted to the RYCV website.

2.2 The race office is located at the main RYCV office, telephone 9397 1277, email [rycv@rycv.asn.au](mailto:rycv@rycv.asn.au).

2.3 On the water, the race committee intends to monitor and communicate on VHF radio channel 15.

## 3 CHANGES TO SAILING INSTRUCTIONS

3.1 Any change to the sailing instructions will be posted before 1000 on the day it will take effect, except that any change to the schedule of races will be posted by 1700 on the day before it will take effect.

## 4 SIGNALS MADE ASHORE

4.1 Signals made ashore will be displayed on the OTB flagpole, adjacent to the OTB club room.

4.2 When flag AP is displayed ashore, '1 minute' is replaced with 'not less than 30 minutes in the RRS Race Signals.

## 5 SCHEDULE OF RACES

5.1 On 16 November a competitor briefing will be held at 1130hrs. Three races are scheduled to be sailed with the first warning at 1300hrs. Subsequent races will be conducted as soon as practicable after the finish of the first race No warning signal will be made after 1600hrs.

5.2 On 17 November a competitor briefing will be held at 0900hrs. Six races are scheduled to be sailed with the first warning at 1025hrs. Subsequent races will be conducted as soon as practicable after the finish of the first race No warning signal will be made after 1500hrs.

5.3 To alert boats that a race or sequence of races will begin soon, the orange starting line flag will be displayed with one sound at least five minutes before a warning signal is made.



## 6 CLASS FLAGS

6.1 Boats will be divided into following divisions.

Division	Classes	Flag
1	International Cadet	Cadet Class Flag
2	International Optimist	Opti Class Flag
3	Mirror	Naval Numeral 1

## 7 VENUES & RACING AREAS

7.1 The racing area will be on the waters of Hobsons Bay between the Williamstown Channel and the Port Melbourne Channel.

## 8 THE COURSES

8.1.1 The diagrams and table in Addendum A show the courses, including the approximate angles between legs, the order in which marks are to be passed, and the side on which each mark is to be left.

8.2 No later than the warning signal, the course to be sailed will be displayed by the Race Committee boat.

8.3 No later than the warning signal, the Race Committee boat may display the approximate compass bearing of the first leg.

8.4 **[DP][NP]** For sprint courses designated with a “W1” when proceeding from marks 1, 1o and C to mark 4 boats must sail on the outside of the start and finish marks where the start and finish lines are “no-go” zones.

## 9 MARKS

9.1 The pin end finish mark shall be a blue cylindrical buoy.

9.2 Rounding marks 1,2 and 5 will be orange cylindrical buoys and rounding marks 1o, 2o,3 and 4 will be yellow cylindrical buoys. Rounding Mark “C” will be an orange cylindrical buoy with a white band marked with a “C”.

9.3 The change of course mark will be a cylindrical buoy of the same colour as the original mark with a black band.

## 10 THE START

10.1 The starting line will be between the mast displaying an orange flag on the race committee signal vessel at the starboard end and an orange cylindrical mark at the port end.

10.2 **[DP][NP]** Boats whose warning signal has not been made shall avoid the starting area during the starting sequence for other races.



- 10.3 A boat starting later than 4 minutes after her starting signal will be scored DNS (Did Not Start) without a hearing. This changes RRS A4 and A5.

## 11 CHANGES OF THE NEXT LEG OF THE COURSE

- 11.1 To change the next leg of the course, the race committee will lay a new mark (or move the finishing line) and remove the original mark as soon as practicable. When in a subsequent change a new mark is replaced, it will be replaced by an original mark.

## 12 THE FINISH

- 12.1 The finishing line will be between a staff displaying a blue flag aboard a race committee vessel and the finishing line mark

## 13 TIME LIMITS AND FINISHING TIMES

- 13.1 On Sat 16 Nov the time limits and target time in minutes are as follows:

Time limit mark 1	Time limit Race	Target time
25 min	60 min	45 min

- 13.2 On Sun 17 Nov the time limits and target time in minutes are as follows:

Time limit mark 1	Time limit Race	Target time
10 min	30 min	20 min

- 13.3 If no boat has passed Mark 1 within the Mark 1 time limit the race will be abandoned.
- 13.4 **[NP]** Failure to meet the target time will not be grounds for redress.
- 13.5 Boats failing to finish within 15 minutes, after the first boat sails the course and finishes, will be scored Did Not Finish without a hearing. This changes rules 35, A4 and A5.

## 14 PROTESTS AND REQUESTS FOR REDRESS

- 14.1 In addition to the requirement to the boat being protested, boats intending to protest shall inform the Race Committee immediately after finishing, and before approaching any coach or support vessel, by approaching the starboard side of the Race Committee vessel at the Finish line, after Finishing, and hailing the protested boat's sail number. The competitor must wait for an acknowledgement from the RC. This changes rule 61.1.



- 14.2 Competitors are to register via the online system all scoring enquiries, and lodge of protest.
- 14.3 Protests and requests for redress or reopening shall be delivered there within the appropriate time limit.
- 14.4 For each class, the protest time limit is 60 minutes after the last boat has finished the last race of the day or the race committee signals no more racing today, whichever is later.
- 14.5 Notices will be posted no later than 30 minutes after the protest time limit to inform competitors of hearings in which they are parties or named as witnesses.

## **15 ARBITRATION**

- 15.1 Appendix T Arbitration will apply to this regatta, it is specifically allowed that an Arbitrator may also form part of a subsequent protest committee.
- 15.2** All protests involving a rule of RRS Part 2 or rule 31 will be considered for arbitration.

## **16 SAFETY REGULATIONS**

- 16.1 **[DP]** Care should be taken when crossing a channel when proceeding to and from the racecourse, to avoid shipping in the channels. Crossing should be made wherever under the supervision of a safety or support boat. It is a Harbour Master requirement that recreational boats keep clear of commercial shipping and not to impede their safe passage. Any boat subject of a complaint by a Ship's master or race official for not keeping clear of commercial shipping may be disqualified.
- 16.2 Competitors shall always wear personal flotation devices while afloat, except briefly while changing or adjusting clothing or personal equipment.
- 16.3 Boats not leaving the harbour for a scheduled race shall promptly use the electronic sign on/off system by selecting "Not Sailing Today".
- 16.4 Before leaving to race on each scheduled racing day, a crew shall sign-on electronically using the online sign on/off system.
- 16.5 After returning to shore on each scheduled racing day, a crew shall sign-off electronically using the online sign on/off system within the protest time limit.
- 16.6 Instructions for use of electronic sign on/off system:
  - 16.6.1 Competitors shall provide a contact mobile phone number on the entry system.
  - 16.6.2 Competitors will receive a text message prior to the first race containing a link to the sign on system.



- 16.6.3 Prior to leaving the shore, competitors shall click on the link, select the “Sign on/off” link in the menu and select either “Sign on” or “Not Sailing Today”.
- 16.6.4 On returning to shore after racing, competitors shall click on the “Sign Off” link.
- 16.6.5 Competitors are to register via the online system all crew substitution.
- 16.6.6 If for some reason the competitor is having issues with the sign on/off, contact the regatta office or shore marshal who will manually sign you on/off.
- 16.7 If the electronic sign on/off system is not available due to any reason a paper sign on/off system will be provided in the OTB clubrooms.
- 16.8 **[DP]** A boat that retires from racing shall notify the race committee before leaving the racing area, or if that is not possible, shall notify the race office as soon as possible after returning ashore and shall complete a retirement declaration in the online notice board before the expiry of the protest time limit.
- 16.9 **[DP]** Boats not racing shall remain clear of boats that are racing and official boats.
- 16.10 A boat that retires from a race shall notify the race committee as soon as possible.

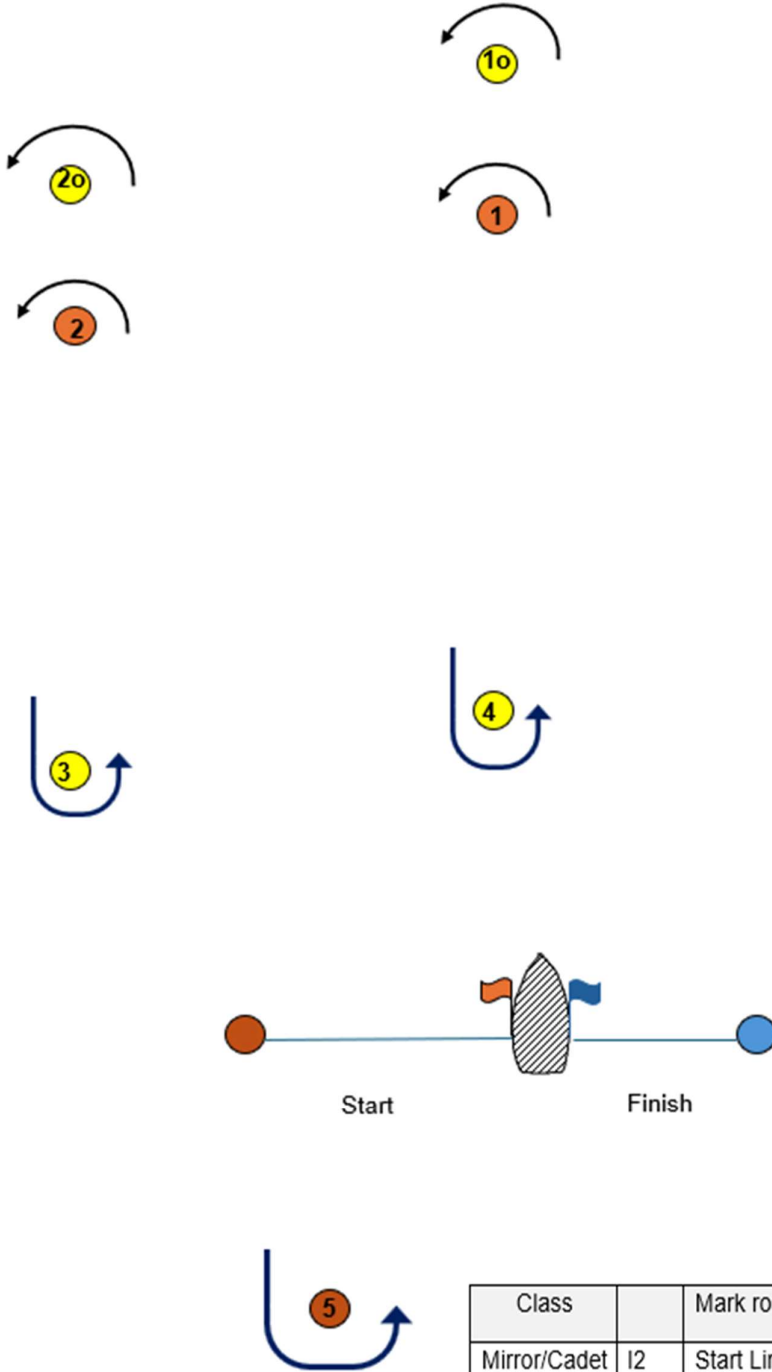
## **17 OFFICIAL BOATS**

- 17.1 Official boats may display the Royal Yacht Club of Victoria burgee.



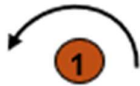
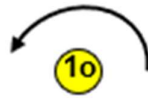
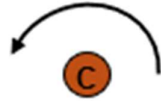
# ADDENDUM A – THE COURSES

## Trapezoid courses

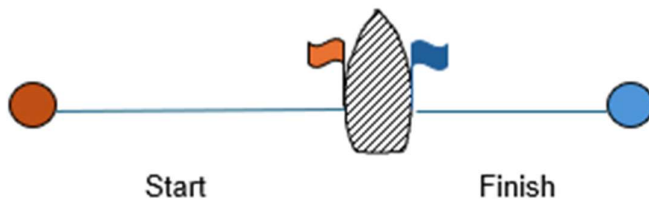


Class		Mark rounding Order all to Port
Mirror/Cadet	I2	Start Line- 1o - 4 - 1o - 2o - 3 - 5 - Finish Line
	O2	Start Line- 1o - 2o - 3 - 2o - 3 - 5 - Finish Line
Optimist	I2	Start Line- 1 - 4 - 1 - 2 - 3 - 5 - Finish Line
	O2	Start Line- 1 - 2 - 3 - 2 - 3 - 5 - Finish Line

# WL courses

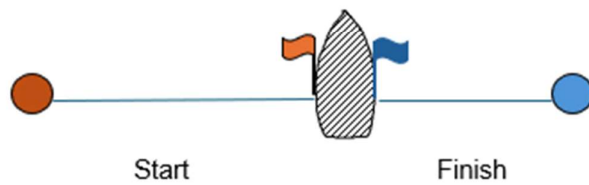
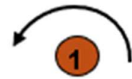
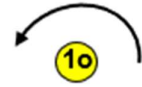


Signal	Mark Rounding Order (single marks to Port)
LR1 Optimist	Start – 1 – Finish
LR2 Optimist	Start – 1 - 4 - 1 - Finish
LR1 Cadet	Start – 10 - Finish
LR2 Cadet	Start – 10 - 4 - 10 - Finish
LR1 Mirror	Start – C - Finish
LR2 Mirror	Start – C - 4 - C - Finish





# SPRINT Courses



Signal	Mark Rounding Order (single marks to Port)
W1 Optimist	Start – 1 – 4 - Finish
W1 Cadet	Start – 1o – 4 - Finish
W1 Mirror	Start – C – 4 - Finish

**[DP][NP]** When proceeding from marks 1,1o and C to mark 4 boats must sail on the outside of the start and finish marks where the start and finish lines are “no-go” zones.